

Totteridge Properties

Totteridge.com

724-838-3660

For inquires, please contact Patrick G. Cendes, President of Real Estate

**Featured Properties:**



---

1215 Bellfield Ct	\$367,500
-------------------	-----------

---

Community: Village of Totteridge

Lot: 224A

SF: 2700

Bedrooms: 3

Bathrooms: 2.5

Overlooking the grandeur of this Rees Jones design, this duplex model has an open floor plan, a loft, and an all-stone exterior.

Villa, Cottage, or Attached  
Just Sold

[View More Details](#)

Real estate and other amenities are owned by Totteridge Properties LLC (TP) and/or other affiliates of Tanto Holding Company LLC and by unrelated third parties such as community homeowner associations. Certain properties herein are for informational purposes only, as TP is not involved in solicitation of offers, marketing, or sale of Resale Properties. Information is believed accurate on date printed, but may be subject to change.

Totteridge Properties

Totteridge.com

724-838-3660

For inquires, please contact Patrick G. Cendes, President of Real Estate



---

1217 Bellfield Ct

\$367,500

---

Community: Village of Totteridge

Lot: 224B

SF: 2700

Bedrooms: 3

Bathrooms: 2.5

With a setting on Hole 1 fairway and open floorplan, this home is built for relaxing, hosting guests, and preparing for your next round of golf.

Villa, Cottage, or Attached  
Just Sold

[View More Details](#)

Real estate and other amenities are owned by Totteridge Properties LLC (TP) and/or other affiliates of Tanto Holding Company LLC and by unrelated third parties such as community homeowner associations. Certain properties herein are for informational purposes only, as TP is not involved in solicitation of offers, marketing, or sale of Resale Properties. Information is believed accurate on date printed, but may be subject to change.

Totteridge Properties

Totteridge.com

724-838-3660

For inquires, please contact Patrick G. Cendes, President of Real Estate



---

1211 Bellfield Ct

\$367,500

---

Community: Village of Totteridge

Lot: 223A

SF: 2700

Bedrooms: 3

Bathrooms: 2.5

There's only a handful of units sitting on the golf course, so if you ever dreamed of living on a golf course, this is your opportunity!

Villa, Cottage, or Attached

[View More Details](#)

Real estate and other amenities are owned by Totteridge Properties LLC (TP) and/or other affiliates of Tanto Holding Company LLC and by unrelated third parties such as community homeowner associations. Certain properties herein are for informational purposes only, as TP is not involved in solicitation of offers, marketing, or sale of Resale Properties. Information is believed accurate on date printed, but may be subject to change.



Totteridge Properties

Totteridge.com

724-838-3660

For inquires, please contact Patrick G. Cendes, President of Real Estate

The map shows a street named Bellfield Court with several lots. Lot 223 is marked 'Available' and contains units A and B. Lot 224 is marked 'Sold' and contains units A and B. Lot 225 is marked 'Available' and contains units A and B. Lot 226 is marked 'Available' and contains units B and A. Lot 227 is marked 'Available' and contains units B and A. Lot 222 is marked 'Available' and contains units B and A. A legend indicates: Sold (light brown), Lot Deposit (dark brown), and Available (green). The map also features a silhouette of a person and the text 'The Villages at TOTTERIDGE' and 'Bellfield Court'.

**BERKSHIRE HATHAWAY**  
HomeServices  
The Preferred Realty

**Rebecca Parry, Pat Crawford & Patrick Cendes**  
Office: 724.838.3660  
www.ThePreferredRealty.com

---

1213 Bellfield Ct	\$367,500
-------------------	-----------

---

Community: Village of Totteridge

Lot: 223B SF: 2700

Bedrooms: 3 Bathrooms: 2.5

Newly constructed patio home on Rees Jones designed golf course features top of the line appliances, cozy fireplace, and desirable communal amenities.

Villa, Cottage, or Attached  
Just Sold

[View More Details](#)

Real estate and other amenities are owned by Totteridge Properties LLC (TP) and/or other affiliates of Tanto Holding Company LLC and by unrelated third parties such as community homeowner associations. Certain properties herein are for informational purposes only, as TP is not involved in solicitation of offers, marketing, or sale of Resale Properties. Information is believed accurate on date printed, but may be subject to change.

Totteridge Properties

Totteridge.com

724-838-3660

For inquires, please contact Patrick G. Cendes, President of Real Estate



---

2041 Totteridge Drive

Call For Pricing

Community: Village of Banbury

Lot: 4

SF: 4400

Bedrooms: 3

Bathrooms: 2.5

This 0.652 acre homesite offers a dramatic panorama of the pristine countryside and golf course, which was designed by legendary architect Rees Jones.

Single Family Home

Just Sold

[View More Details](#)

Real estate and other amenities are owned by Totteridge Properties LLC (TP) and/or other affiliates of Tanto Holding Company LLC and by unrelated third parties such as community homeowner associations. Certain properties herein are for informational purposes only, as TP is not involved in solicitation of offers, marketing, or sale of Resale Properties. Information is believed accurate on date printed, but may be subject to change.

Totteridge Properties

Totteridge.com

724-838-3660

For inquires, please contact Patrick G. Cendes, President of Real Estate



---

2043 Totteridge Drive

\$429,000

---

Community: Village of Banbury

Lot: 5

SF: 2600

Bedrooms: 4

Bathrooms: 2.5

This gorgeous lot overlooking the Rees Jones designed golf course and surrounding mountains is home to the Totteridge model. The Totteridge model is a cape-style home.

Single Family Home  
Sold

[View More Details](#)

Real estate and other amenities are owned by Totteridge Properties LLC (TP) and/or other affiliates of Tanto Holding Company LLC and by unrelated third parties such as community homeowner associations. Certain properties herein are for informational purposes only, as TP is not involved in solicitation of offers, marketing, or sale of Resale Properties. Information is believed accurate on date printed, but may be subject to change.



Totteridge Properties

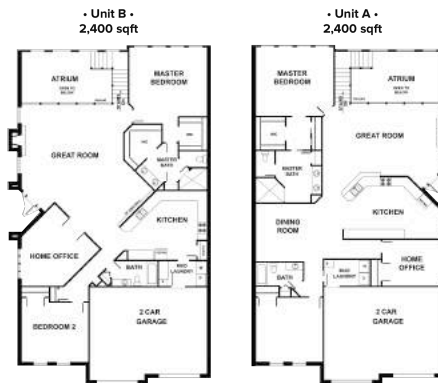
Totteridge.com

724-838-3660

For inquires, please contact Patrick G. Cendes, President of Real Estate



• The Villages at •  
TOTTERIDGE



Rebecca Parry, Pat Crawford & Patrick Cendes

724.838.3660

www.Totteridge.com

BERKSHIRE  
HATHAWAY  
HomeServices

The Preferred Realty

1222 Bellfield Court

Call For Pricing

Community: The Villages at Totteridge

Lot: 227A

SF: 2400

Bedrooms: 2

Bathrooms: 2

Single story living combine with premiere craftsmanship in our new Preston model. Delivering in 2019.

To Be Built Model

View More Details

Real estate and other amenities are owned by Totteridge Properties LLC (TP) and/or other affiliates of Tanto Holding Company LLC and by unrelated third parties such as community homeowner associations. Certain properties herein are for informational purposes only, as TP is not involved in solicitation of offers, marketing, or sale of Resale Properties. Information is believed accurate on date printed, but may be subject to change.

Totteridge Properties

Totteridge.com

724-838-3660

For inquires, please contact Patrick G. Cendes, President of Real Estate



---

1224 Bellfield Court

Call For Pricing

---

Community: The Villages at Totteridge

Lot: 227B

SF: 2400

Bedrooms: 2

Bathrooms: 2

The Preston model, our new ranch villa, will be featured on this homesite with the serenity unique to Western Pennsylvania.

To Be Built Model

[View More Details](#)

Real estate and other amenities are owned by Totteridge Properties LLC (TP) and/or other affiliates of Tanto Holding Company LLC and by unrelated third parties such as community homeowner associations. Certain properties herein are for informational purposes only, as TP is not involved in solicitation of offers, marketing, or sale of Resale Properties. Information is believed accurate on date printed, but may be subject to change.



Totteridge Properties

Totteridge.com

724-838-3660

For inquires, please contact Patrick G. Cendes, President of Real Estate



---

Lot 27 Totteridge Drive

Call For Pricing

---

Community: Village of Banbury

Lot: 27

SF: 2463

Bedrooms: 3

Bathrooms: 3

With a terrific view of both the Laurel Highlands and the golf course, this is country living at its finest.

Sold

Real estate and other amenities are owned by Totteridge Properties LLC (TP) and/or other affiliates of Tanto Holding Company LLC and by unrelated third parties such as community homeowner associations. Certain properties herein are for informational purposes only, as TP is not involved in solicitation of offers, marketing, or sale of Resale Properties. Information is believed accurate on date printed, but may be subject to change.

Totteridge Properties

Totteridge.com

724-838-3660

For inquires, please contact Patrick G. Cendes, President of Real Estate



---

1017 Ashfield Way S

\$367,000

---

Community: Village of Totteridge

Lot: 229

Peaceful, tranquil living is available on this elevated lot. Single unit option is available on this fantastic property.

Sold

[View More Details](#)

Real estate and other amenities are owned by Totteridge Properties LLC (TP) and/or other affiliates of Tanto Holding Company LLC and by unrelated third parties such as community homeowner associations. Certain properties herein are for informational purposes only, as TP is not involved in solicitation of offers, marketing, or sale of Resale Properties. Information is believed accurate on date printed, but may be subject to change.