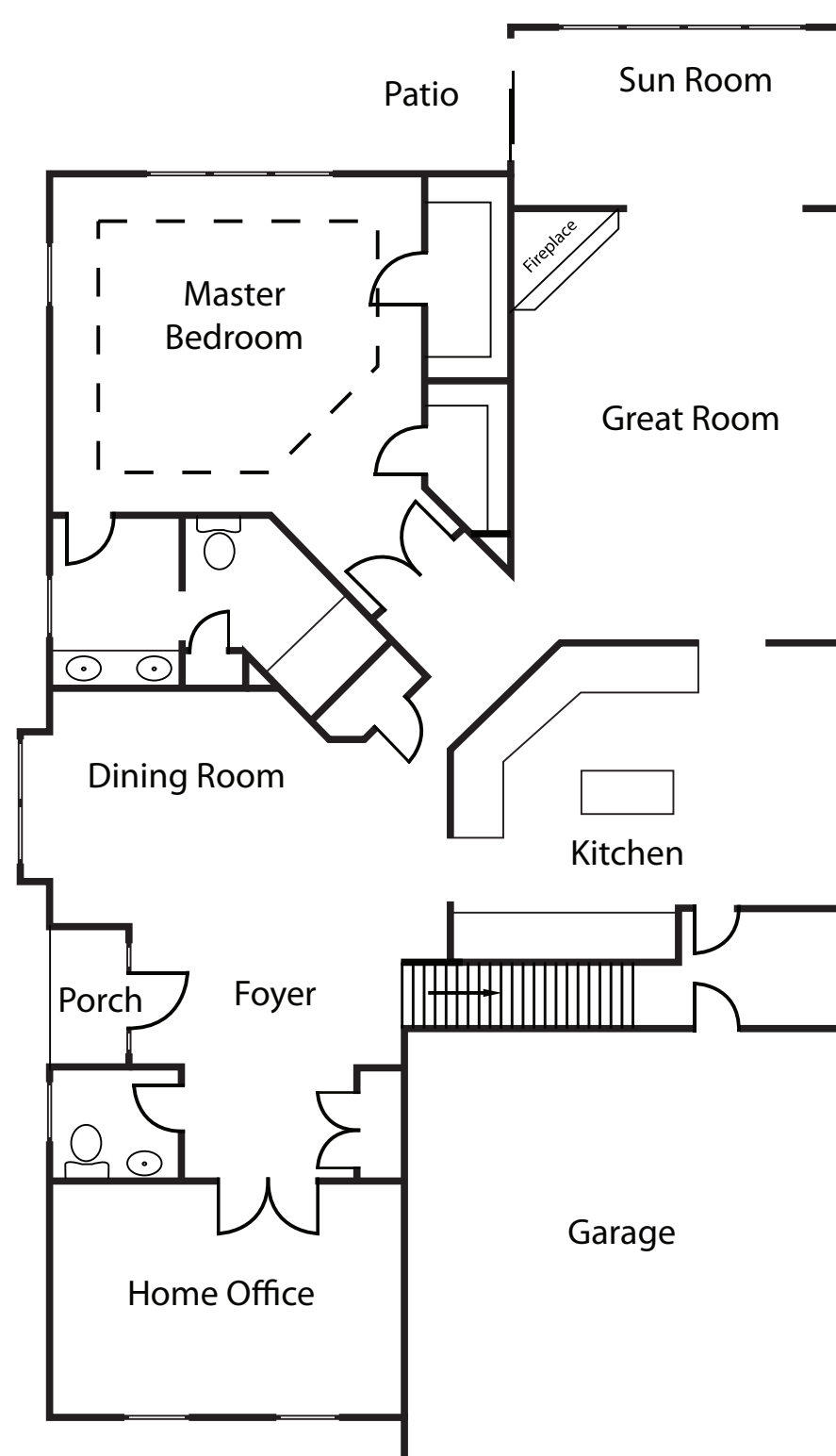




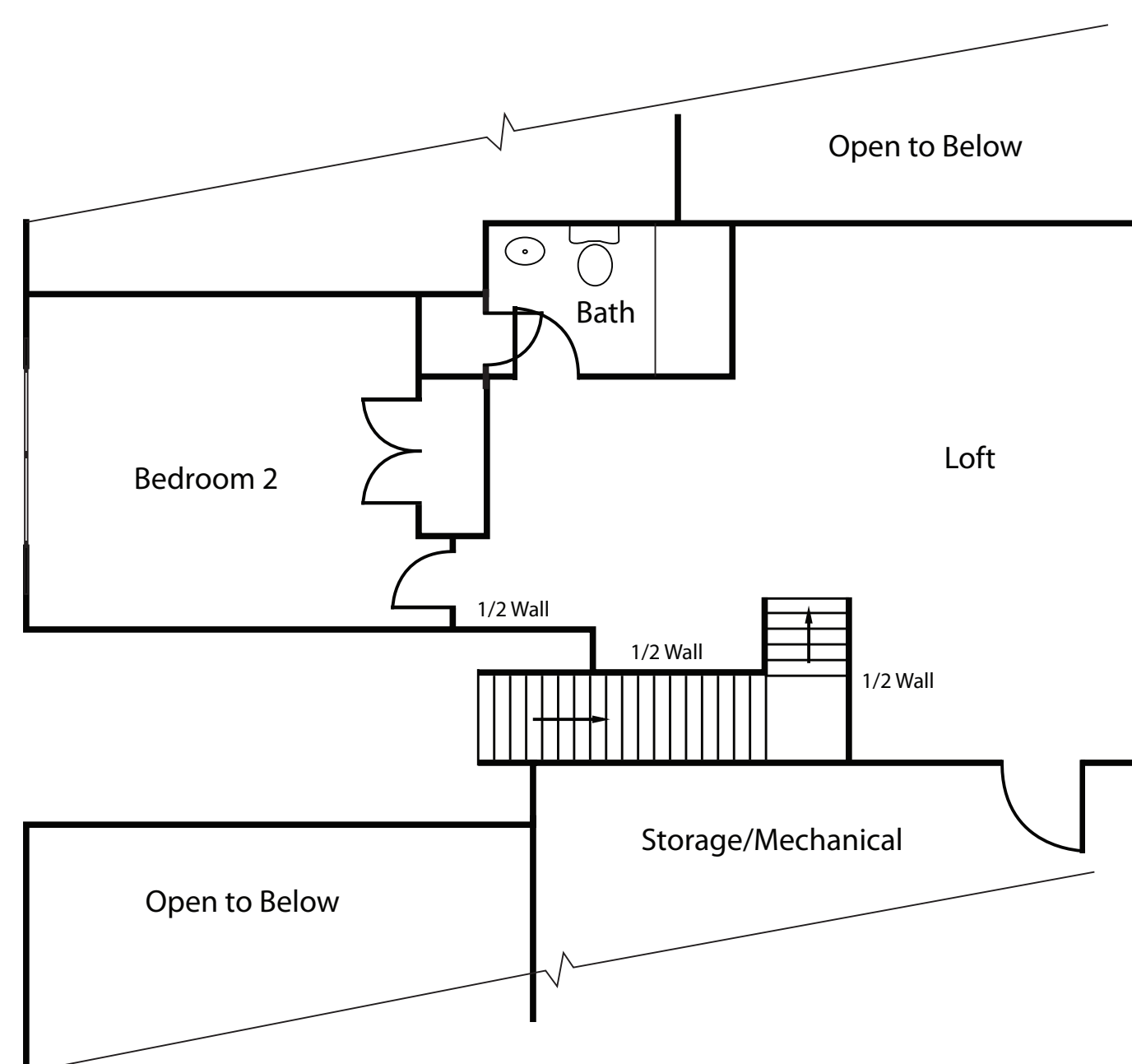
## The Luxe Floor Plans



### • First Floor •



### • Second Floor •



• The Villages at •  
**TOTTERIDGE**



**BERKSHIRE HATHAWAY**  
HomeServices  
The Preferred Realty

**Rebecca Parry &  
Pat Crawford**  
**Patrick G. Cendes**  
Office: 724.838.3660  
[www.Totteridge.com](http://www.Totteridge.com)

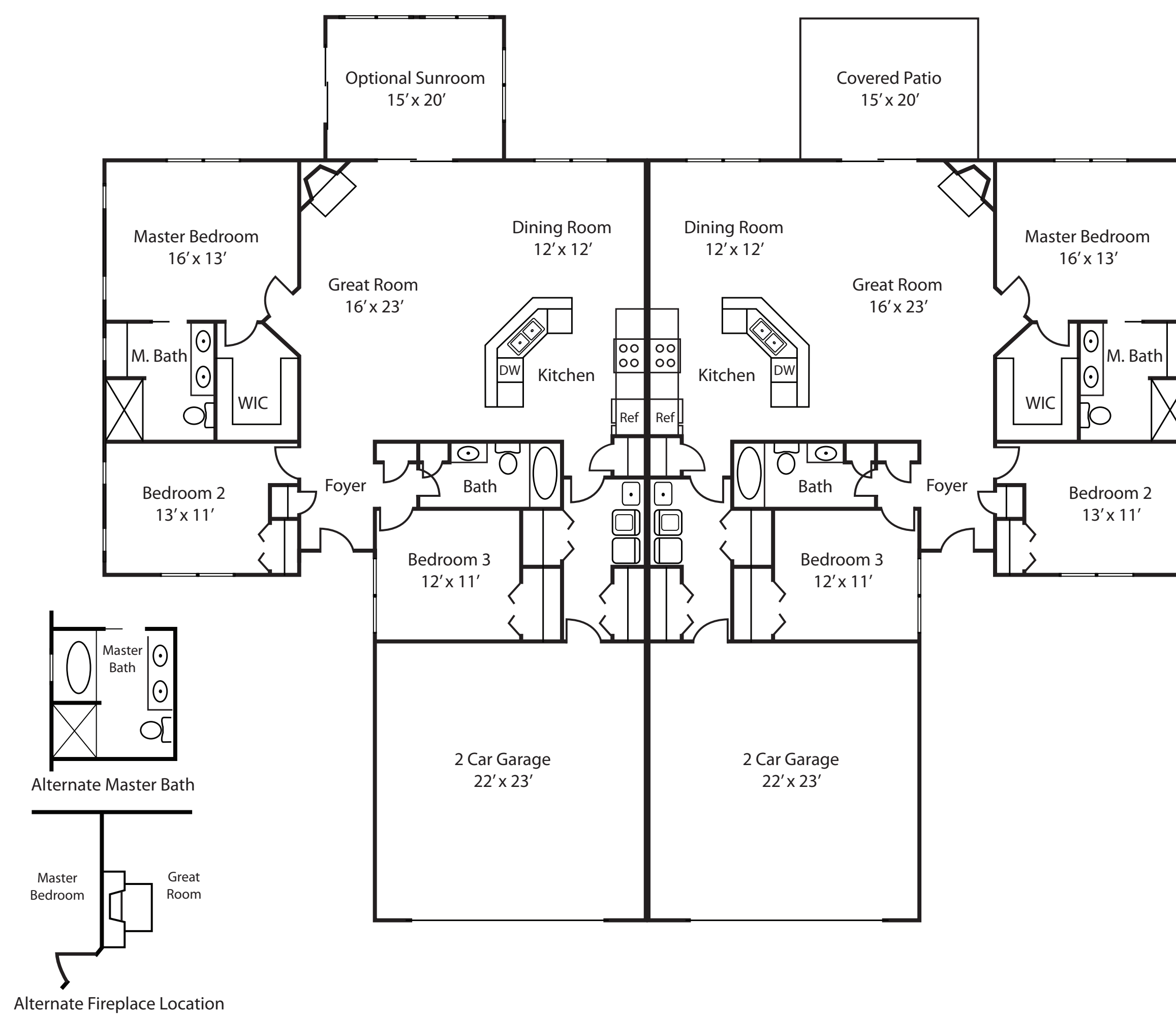
©2018 BHH Affiliates, LLC. An independently owned and operated franchise of BHH Affiliates, LLC. Berkshire Hathaway HomeServices and Berkshire Hathaway HomeServices symbol are registered service marks of HomeServices of America, Inc.® Equal Housing Opportunity. Information not verified or guaranteed. If your home is currently listed with a Broker, this is not a solicitation.





## Patio Home Floor Plans

**RICCIUTI**  
ENTERPRISE



• The Villages at •  
**TOTTERIDGE**



**BERKSHIRE HATHAWAY**  
HomeServices  
The Preferred Realty

**Rebecca Parry &  
Pat Crawford**  
**Patrick G. Cendes**  
Office: 724.838.3660  
[www.Totteridge.com](http://www.Totteridge.com)

©2018 BHH Affiliates, LLC. An independently owned and operated franchise of BHH Affiliates, LLC. Berkshire Hathaway HomeServices and Berkshire Hathaway HomeServices symbol are registered service marks of HomeServices of America, Inc.® Equal Housing Opportunity. Information not verified or guaranteed. If your home is currently listed with a Broker, this is not a solicitation.





The Preston



• The Villages at •  
TOTTERIDGE

• Unit B •  
2,400 sqft



• Unit A •  
2,400 sqft



Rebecca Parry, Pat Crawford & Patrick Cendes

724.838.3660

[www.Totteridge.com](http://www.Totteridge.com)

BERKSHIRE  
HATHAWAY  
HomeServices

The Preferred Realty