

Totteridge Properties
Totteridge.com
724-837-6700



1320 Lynchfield Lane \$299,000

Community: Village of Totteridge

Lot: 217B

SF: 1400

Bedrooms: 3

Bathrooms: 2

Charming one level living with open Villa floorplan. Includes access to a pool, exercise room, and clubhouse.

Villa, Cottage, or Attached

[View More Details](#)

Real estate and other amenities are owned by Totteridge Properties LLC (TP) and/or other affiliates of Tanto Holding Company LLC and by unrelated third parties such as community homeowner associations. Certain properties herein are for informational purposes only, as TP is not involved in solicitation of offers, marketing, or sale of Resale Properties. Information is believed accurate on date printed, but may be subject to change.

Totteridge Properties
Totteridge.com
724-837-6700



2041 Totteridge Drive	\$50,000
-----------------------	----------

Community: Village of Banbury

Lot: 4

This 0.652 acre homesite offers a dramatic panorama of the pristine countryside and golf course, which was designed by legendary architect Rees Jones.

[Homesite](#)

[View More Details](#)

Real estate and other amenities are owned by Totteridge Properties LLC (TP) and/or other affiliates of Tanto Holding Company LLC and by unrelated third parties such as community homeowner associations. Certain properties herein are for informational purposes only, as TP is not involved in solicitation of offers, marketing, or sale of Resale Properties. Information is believed accurate on date printed, but may be subject to change.

Totteridge Properties
Totteridge.com
724-837-6700



1211 Bellfield Court

Call For Pricing

Community: Village of Totteridge

Lot: 223A

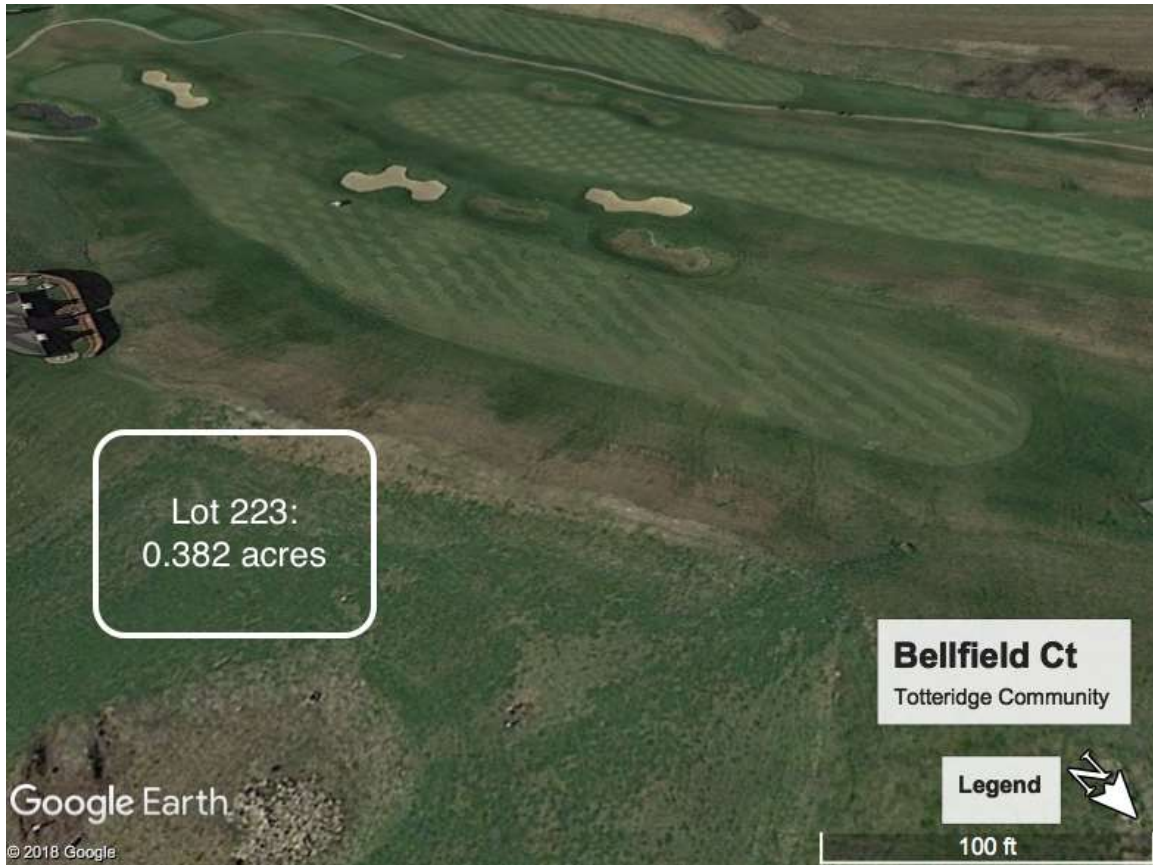
Long golf view on the #1 fairway of this Rees Jones design. Fantastic building site with member access to pool, exercise room, and clubhouse.

[Homesite](#)

[View More Details](#)

Real estate and other amenities are owned by Totteridge Properties LLC (TP) and/or other affiliates of Tanto Holding Company LLC and by unrelated third parties such as community homeowner associations. Certain properties herein are for informational purposes only, as TP is not involved in solicitation of offers, marketing, or sale of Resale Properties. Information is believed accurate on date printed, but may be subject to change.

Totteridge Properties
Totteridge.com
724-837-6700



1213 Bellfield Court

Call For Pricing

Community: Village of Totteridge

Lot: 223B

Beautiful golf course lot with a view of Hole #1. Ideal for a customized single or duplex home.

[Homesite](#)

[View More Details](#)

Real estate and other amenities are owned by Totteridge Properties LLC (TP) and/or other affiliates of Tanto Holding Company LLC and by unrelated third parties such as community homeowner associations. Certain properties herein are for informational purposes only, as TP is not involved in solicitation of offers, marketing, or sale of Resale Properties. Information is believed accurate on date printed, but may be subject to change.

Totteridge Properties
Totteridge.com
724-837-6700



Lot 27 Totteridge Drive

Under Contract

Community: Village of Banbury

Lot: 27

SF: 2463

Bedrooms: 3

Bathrooms: 3

With a terrific view of both the Laurel Highlands and the golf course, this is country living at its finest.

Single Family Home

Under Contract

[View More Details](#)

Real estate and other amenities are owned by Totteridge Properties LLC (TP) and/or other affiliates of Tanto Holding Company LLC and by unrelated third parties such as community homeowner associations. Certain properties herein are for informational purposes only, as TP is not involved in solicitation of offers, marketing, or sale of Resale Properties. Information is believed accurate on date printed, but may be subject to change.